



electrometal

GEORGIOS ANT. MATTHAIYOU & SIA O.E.

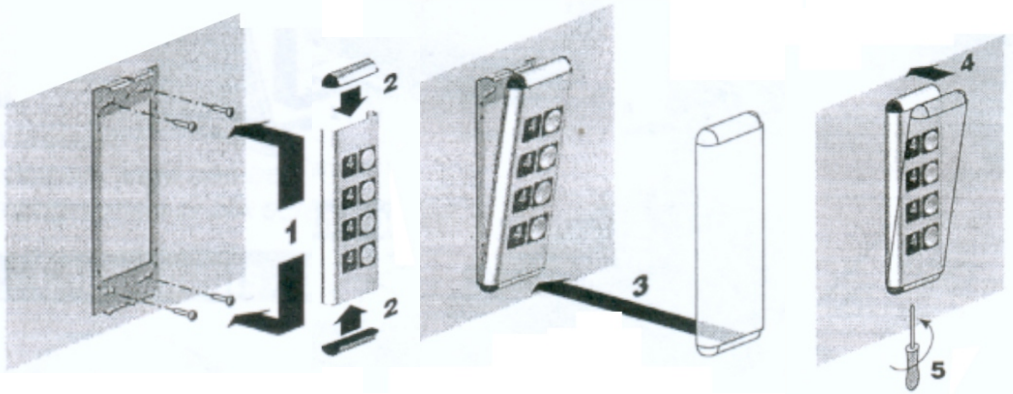
PUSHBUTTON STATIONS wall mounted



Surface mounted plate for car lift is particularly suitable for modernisation works. Its reduced depth (only 21mm) makes it possible to overlap a wall without the necessity of any wall constructions. All the accessories of the pushbutton station are mountable on the panel. The panel is available in stainless steel, scotch-brite or mirror, brass and bronzo with widths 100 and 200mm; by 200mm width a special topping emergency light is available. The edges of the panel are available in a variety of colours in correspondence with the buttons. A special clipping system and a tightening ring accompanies the pushbutton station.



MOUNTING



DISMANTLING

