

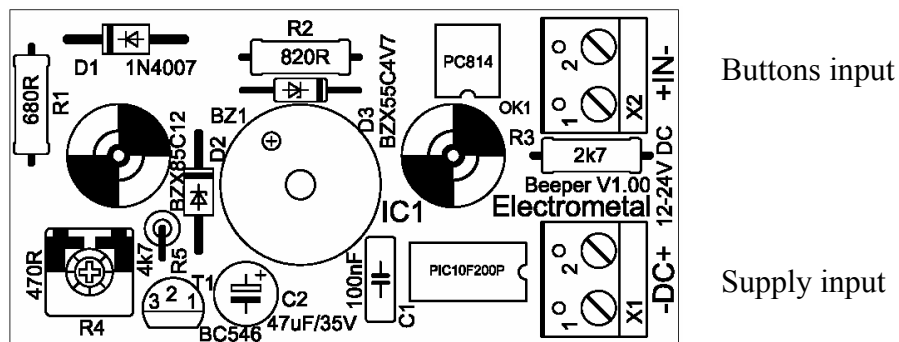
Electronic device : BeeperV1.00

The electronic device Beeper V1.00 creates a sound with standard frequency (2300 Hz) and standard time (100 msec) when we push the relative button of the panel.

The connection is shown in picture1. In voltage supply input (-DC+) we connect the voltage 12V DC /24V DC. The input of the button (+IN-) is connected pararell with the relative button. The voltage of the button must be 12 or 24V DC.

The regulation of the sound is making rotating the relative regulator (R4) with a small screwdriver.

Picture 1



Sound
regulator

For any further information we remain at your disposal.